

Trend Micro™

# Advanced Reporting & Management

Superior Visibility and Control

If you lose visibility into what's happening on your network, you have no control over what happens on it. Whether it's malware delivered from a legitimate site, accessing illegal or inappropriate content, or using the latest Web 2.0 app to stream video, you need to know who is going where and when. Users are accustomed to using the latest technologies both at home and in the workplace. To combat the recent dramatic rise in web threats, your enterprise needs immediate access to critical information about the safety of your network and how the Internet is being used. You also need clear visibility into users' Internet activity with real-time monitoring and detailed forensics in order to adequately protect against these threats.

**Trend Micro™ Advanced Reporting and Management** provides customers with unprecedented visibility into how the Internet is impacting their organization. Advanced Reporting and Management applies state-of-the-art database technology and user interface design to help reduce the organization's exposure to non-business Internet use and increase their security posture against the latest web threats. Administrators and management have the ability to quickly and easily understand what is happening across their network in real time, drill down into specific areas of interest, and set policies in InterScan Web Security to enforce their network rules.

Advanced Reporting and Management centralizes the logging, reporting, configuration management and policy synchronization across multiple InterScan Web Security servers. Through a single console, administrators can more effectively monitor, manage, and secure their organizations Internet usage. Because the solution installs as a software virtual appliance, IT can consolidate hardware resources, optimize utilization, and reduce the cost of deployment and operation.

## KEY FEATURES

### Real-time Monitoring

- Delivers real-time, customizable, dashboard data with the flexibility to concentrate activity monitoring on specific areas of interest and track Internet use as it happens
- Drill-down into specific user Internet activity

### Robust Reporting

- More than 50 standard quick reports including activity by user, application usage, time by user, top sites, and much more
- Features completely customizable reporting, including ad-hoc reports and scheduled daily, weekly, and monthly reports
- Supports anonymous logging and reporting to protect end-user privacy

### Centralized Management

- Simplifies management of distributed gateway solutions across the WAN
- Provides a consolidated view across distributed deployments, and simplifies overall management with centralized statistics, logs, and reports

- Provides ability to set, replicate and synchronize policies across multiple gateway servers
- Offload logs for data retention and compliance, thus optimizing local disk usage on servers

### State-of-the-art User Interface

- Supports development of custom dashboard views that monitor network utilization, live statistics, URL activity, and malware trending
- Displays data in definable forms such as a table, line, bar or pie chart
- Provides quick access to details on any data of interest using drill-down capabilities in each window
- Supports creation of custom reports using open source iReports format

### High-performance Database

- Offloads reporting and logging from individual gateway servers for higher throughput and lower latency
- Supports log data grooming and for historical record-keeping and compliance

## SOFTWARE VIRTUAL APPLIANCE

### Protection Points (with InterScan Web Security)

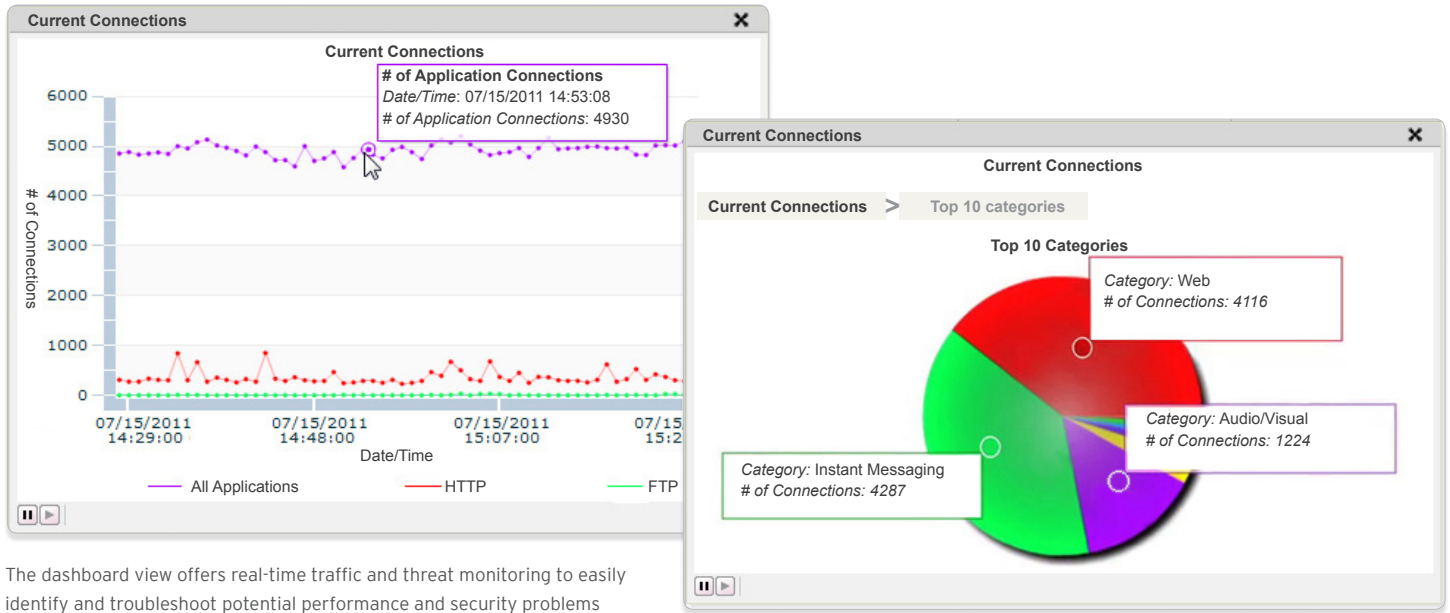
- Application Control
- URL Filtering
- Web Threats
- Viruses & Worms
- Bots
- Spyware & Keyloggers
- Malicious Mobile Code
- Rootkits
- Phishing
- Content Threats

## KEY BENEFITS

- Accelerates problem resolution by monitoring Internet use and threat activity in real time
- Simplifies operations by centralizing logging, reporting and management for multi-unit support
- Extends visibility with over 50 standard reports and custom report capability
- Reduces costs with real-time troubleshooting and forensics capabilities
- Standardizes security policies with policy and configuration replication and synchronization

**Trend Micro™ Advanced Reporting and Management** provides flexible deployment options to support your gateway security strategy. Implement this InterScan Web Security add-on either as a software or virtual appliance, supporting both standalone servers, VMware and Hyper-V.

- Software appliance mode converts a standard server into hardened, high-performance security management appliance
- Virtual appliance mode supports hardware consolidation and leverages the failover and resource optimization features of VMware and Hyper-V



The dashboard view offers real-time traffic and threat monitoring to easily identify and troubleshoot potential performance and security problems

**SYSTEMS REQUIREMENTS**

**Server Requirements**

**Operating System**

A purpose-built, hardened, and performance-tuned operating system is included with ARM. No additional operating system software is required.

**Hardware Requirements**

**Minimum Requirements:**

ARM automatically partitions the detected disk space as required. The minimum disk space specified allows customers to successfully evaluate ARM in most environments. The amount of disk space required for production environments will depend on the number of log events generated from the InterScan Web Security gateway device(s) registered to ARM and the number of days required to retain the data.

- Single 2.0 GHz Intel™ Core2Duo™ 64-bit processor supporting Intel™ VT™ or equivalent
- 2GB RAM
- 8GB of disk space.
- Monitor that supports 1280 x 1024 resolution with 256 colours or higher

**Recommended Requirements:**

The number of users is an estimate and is used to roughly gauge the number of events produced per second. Using events per second as the primary sizing metric is recommended.

**Under 10,000 Users**

Dual 2.8 GHz Intel Core2Duo 64-bit processor or equivalent for up to 2500 event per second.

- 4GB RAM • Up to a maximum of 1000 events per second
- 20 total active dashboards among all administrators
- 8GB RAM • Up to a maximum of 2500 events per second
- 40 total active dashboards among all administrators

**Over 10,000 Users**

Dual 3.16 GHz Intel QuadCore 64-bit processor or equivalent for over 2500 events per second.

- 8GB RAM • Up to a maximum of 2500 events per second
- 40 total active dashboards among all administrators
- 12GB RAM • Up to a maximum of 4000 events per second
- 60 total active dashboards among all administrators
- 16GB RAM • Up to a maximum of 6000 events per second
- 80 total active dashboards among all administrators



©2011 by Trend Micro Incorporated. All rights reserved. Trend Micro, the Trend Micro T-ball logo, Trend Micro Control Manager, InterScan, and TrendLabs are trademarks or registered trademarks of Trend Micro Incorporated. All other company and/or product names may be trademarks or registered trademarks of their owners. Information contained in this document is subject to change without notice. [DS03\_ARM\_110803GB] [www.trendmicro.com](http://www.trendmicro.com)